

Custom SSL certificates may be applied and used to support HTTPS services on the Advanced Features units. Configuring custom SSL certificates involves the following considerations:

1. Display the Default Services.
2. Disable the HTTP Service.
3. Enable the HTTPS Service.
4. Login to the GUI via HTTPS and Upload the Custom SSL Certificate (PEM file).
5. Apply the Custom SSL Certificate.

1. Display the Default Services

The default services configuration are displayed via the console interface. Use the following procedure to connect to the Advance Features unit and display the default services configuration.

1. Connect a Serial cable from a COM port on the laptop or PC to the Serial Interface on the unit.
2. Launch Putty and configure the Serial connection as follows:

```

Speed (baud)  115200
Data bits     8
Stop bits     1
Parity        None
Flow Control  XON/XOFF
    
```

3. Press the Return key.
4. Enter enable.
5. Enter the following command to display the default services configuration.

```

Switch# show services

Networking services configuration:

Service Name      Status      Port      Protocol  Service ACL
-----+-----+-----+-----+-----
http              enable      80        TCP       -
https             disable     443       TCP       -
rpc-api           disable     -         TCP       -
telnet            disable     23        TCP       -
ssh               enable      22        TCP       -
    
```

```
snmp          disable          161          UDP          -
```

2. Disable the HTTP Service

1. Enter the following commands to disable the HTTP service.

```
Switch# configure terminal
Switch(config)# service http disable
Switch(config)# exit
Switch# show services
```

Networking services configuration:

Service Name	Status	Port	Protocol	Service ACL
http	disable	80	TCP	-
https	disable	443	TCP	-
rpc-api	disable	-	TCP	-
telnet	disable	23	TCP	-
ssh	enable	22	TCP	-
snmp	disable	161	UDP	-

3. Enable the HTTPS Service

1. Enter the following commands to enable the HTTPS service.

```
Switch# configure terminal
Switch(config)# service https enable
Switch(config)# exit
Switch# show services
```

Networking services configuration:

Service Name	Status	Port	Protocol	Service ACL
http	disable	80	TCP	-
https	enable	443	TCP	-
rpc-api	disable	-	TCP	-

5. Apply the Custom SSL Certificate

1. Select Security.
2. Select Https Pem_crt.

The key_AFTest.pem will be displayed.

3.

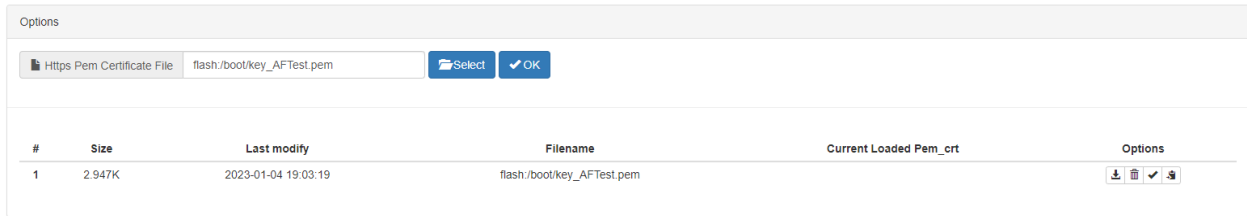
#	Size	Last modify	Filename	Current Loaded Pem_crt	Options
1	2.947K	2023-01-04 19:03:19	flash/boot/key_AFTest.pem		

Select Select.

4. Select the Boot files Tab.
5. Select the pem file “key_AFTest.pem”.

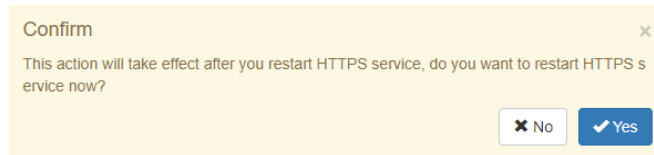
<input type="checkbox"/>	#	Size	Last modify	Filename
<input type="checkbox"/>	1	51.144M	2022-11-29 22:01:56	AggregatorOS-AF1G40-v3.0.15-en.bin
<input type="checkbox"/>	2	1.129K	2022-10-28 15:46:17	F093C5F15E6F.1.lic
<input checked="" type="checkbox"/>	3	2.947K	2023-01-04 19:03:19	key_AFTest.pem
<input type="checkbox"/>	4	1.131K	2023-01-04 17:01:14	startup-config.conf

6. Select OK.
7. Verify the Https Pem Certificate File, new “key_AFTest.pem”.



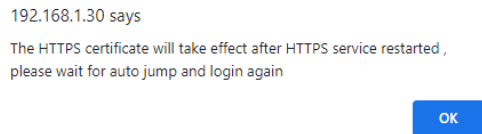
8. Select OK.

The Confirm message will be displayed.



9. Select Yes.

The HTTPS restart message will be displayed.



8. Select OK.

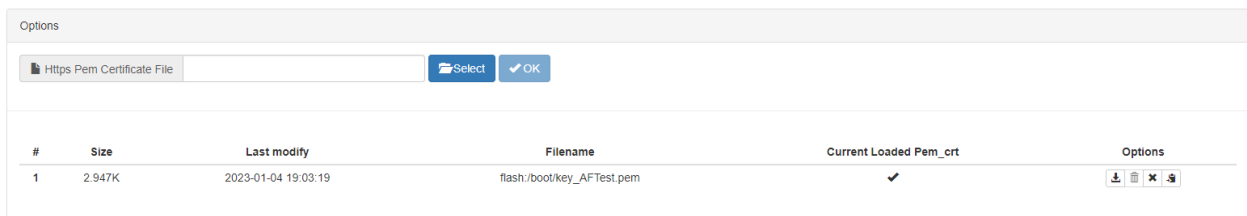
The GUI will refresh.

9. Login to the GUI, (admin/gtadmin1).

10. Select Security.

11. Select Https Pem_crt.

12. Verify the Current Loaded Pem_crt.



13. Select the Download icon to download the pem file.

14. Select the Cancel icon to cancel the current loaded pem file. This will cause the GUI to be restarted back to the login display.
15. Select the Backup icon to create a .pem_BAK file.
16. Select the Delete icon to delete the pem file. However, the pem file must be canceled before delete is allowed.