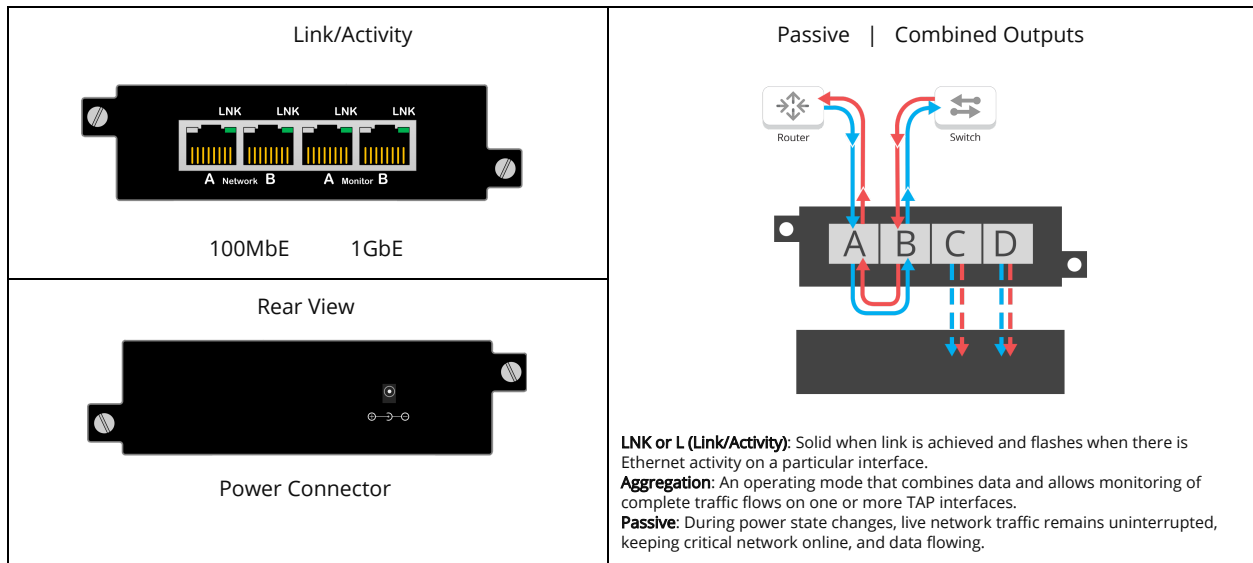


To deploy the P100CCA Portable TAP into your network, simply:

- Unpack the device and attach it securely to the optional rack mount plate in any available slot (RMP-1U sold separately).
- **Do not apply power to the TAP until after the network connections are completed in the next step.**
- Using one straight-through Ethernet cable and one crossover cable, connect ports [A] and [B] of the P100CCA between the two live 100MbE network devices where monitoring is desired. Verify network traffic is flowing, confirming that the network cabling is correct.
- Now apply the power to the TAP by connecting the power supply to the P100CCA TAP and plugging it into a power source.
- Connect ports [C] and [D] to the monitoring tools for aggregated traffic out to the monitoring appliances or analysis tools.

Note: One straight-through and one crossover cable must be used when connecting the live network ports. This device has to be installed into a 100MbE network in order to function properly. Please note that the Monitor ports are always 1GbE, Auto Duplex and Auto MDI/MDIX.



Ordering Information:

| Part No. | Description |
|----------------|---|
| P100CCA | Portable 100MbE Aggregative Passive "Plug and Play" TAP: 100M TAP with two (2) Aggregating 1Gigabit Monitoring Ports, single external power supply. |
| RMP-1U | Rackmount Plate: 1U holds up to four (4) portable TAPs. |

This document is for informational purposes only. The information in this document, believed by Garland Technology to be accurate as of the date of publication, is subject to change without notice. Garland Technology assumes no responsibility for any errors or omissions in this document and shall have no obligation to you as a result of having made this document available to you or based upon the information it contains. ©2017 Garland Technology LLC. All Rights Reserved.