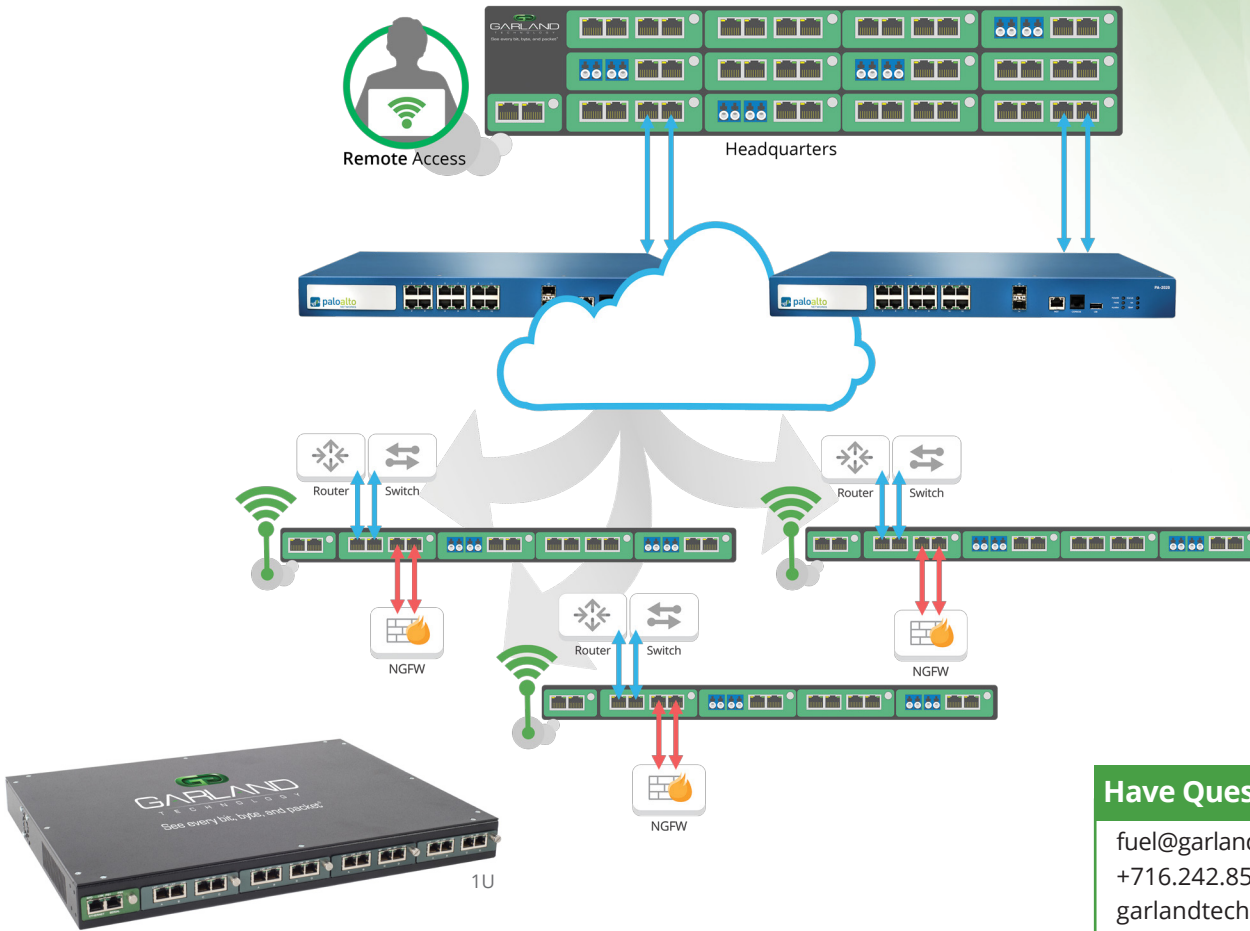


1U or 2U Chassis Solution

1G Solution for PA-3020, PA-3050, PA-3060 and PA-5020



Have Questions?
fuel@garlandtechnology.com
 +716.242.8500
garlandtechnology.com

Chassis options

Model #	Chassis/TAPs*	Power Supplies	Voltage	Current (nominal)	Consumption (nominal)	Dimensions (WxHxD)
M1G1ACE	1U; up to 4 TAPs	Dual Internal AC	88-264VAC	.595 Amps @ 125VAC	50 Watts	17.40" x 1.75" x 13.45" (441.96mm x 44.45mm x 341.63mm)
M1G1DCE	1U; up to 4 TAPs	Dual Internal DC	36-72VDC	2.7 Amps @ 48VDC	50 Watts	
M1G2ACE	2U; up to 12 TAPs	Dual Internal AC	90-264VAC	1.2 Amps @ 125VAC	144 Watts	17.40" x 3.47" x 13.45" (441.96mm x 88.14mm x 341.63mm)
M1G2DCE	2U; up to 12 TAPs	Dual Internal DC	36-72VDC	1.2 Amps @ 48VDC	144 Watts	
M1GC*	Management card: Ethernet/GUI - and - Serial/CLI for M1GxxxE					

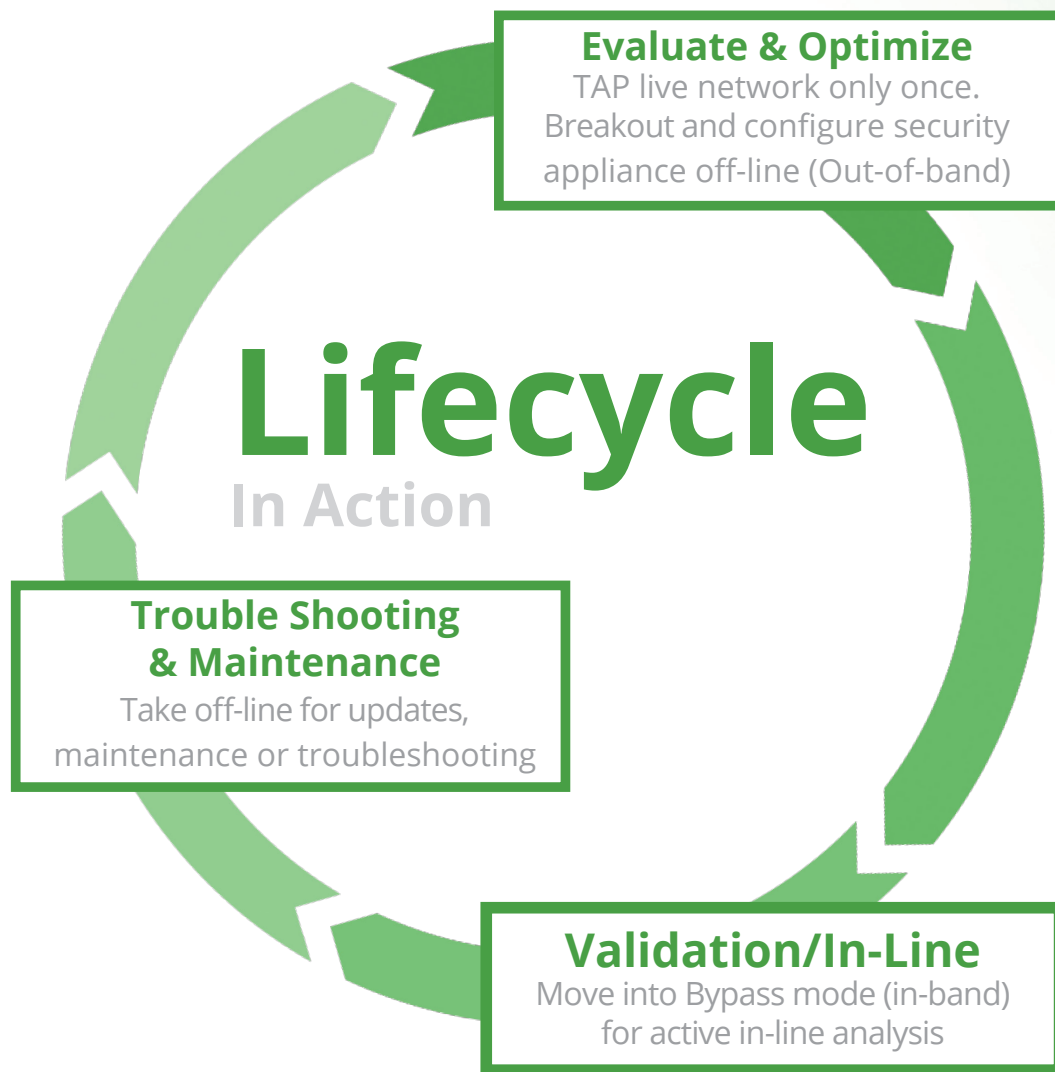
*Blanking plates are used if management card is not required or if not all TAP modules are populated. Management card and additional GT TAP modules can be added to chassis.

Bypass TAP options

Model #	Network Speed	Media		Modes					Packet Injection Support	Packet Slicing
		Network	Monitor	Breakout	Aggregation	Regeneration/ SPAN	Filtering	Bypass		
M1GCCBP	100/1000M	2 Copper-RJ45	2 Copper-RJ45	X	X	X	N/A	X	Yes	Yes
M1GCSBP	100/1000M	2 Copper-RJ45	2 SFP	X	X	X	N/A	X	Yes	Yes
M1GMCBP	1G	2 SX Multi-mode, passive LC-Fiber	2 Copper-RJ45	X	X	X	N/A	X	Yes	Yes
M1GMSBP	1G	2 SX Multi-mode, passive LC-Fiber	2 SFP	X	X	X	N/A	X	Yes	Yes
M1GSCBP	1G	2 LX Single-mode, passive LC-Fiber	2 Copper-RJ45	X	X	X	N/A	X	Yes	Yes
M1GSSBP	1G	2 LX Single-mode, passive LC-Fiber	2 SFP	X	X	X	N/A	X	Yes	Yes

A Best Practice Guide

For deploying and managing your in-line appliances.



Why does Palo Alto partner with Garland Technology as their bypass network TAP vendor?

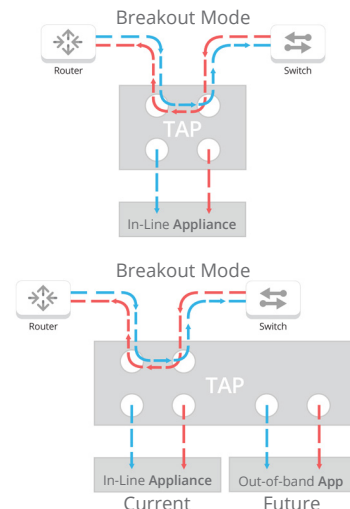
To ensure 100% uptime and visibility for active in-band security appliances.

Network Bypass TAPs have a variety of features, including the ability to go from breakout, aggregating, regenerating and bypass modes meeting your needs today and tomorrow.

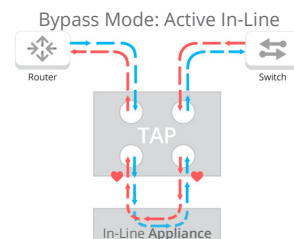
Advantages

- Network uptime
- Expedited problem resolution
- Anytime access to in-line appliance
- Peace of mind

Evaluate & Optimize



Validation/In-Line



Troubleshooting & Maintenance

