



## Challenge

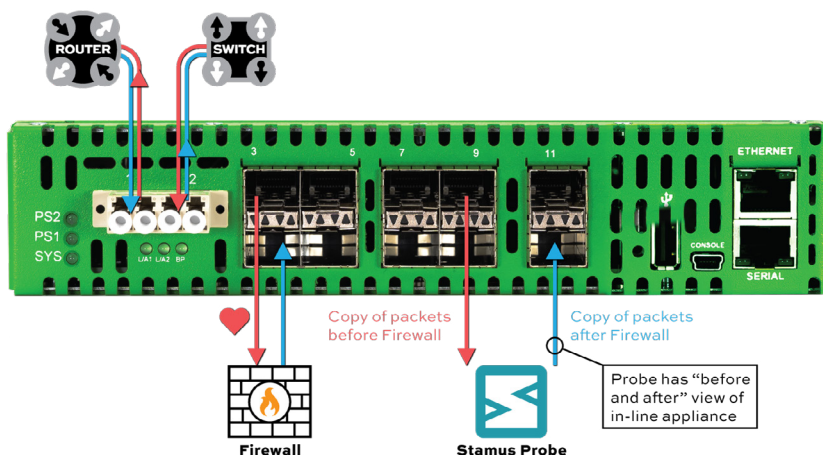
A next-gen firewall or NGFW is an inline network security device that monitors both incoming and outgoing network traffic, and based on a set of rules, decides whether to allow or block that traffic, protecting the network. A NGFW is a complex tool and configuring one successfully is an achievement that is both an art and a science. You need to find the balance between network performance needs and network protection requirements. But what happens if you are unsure if the NGFW has been configured properly (or updates are working as expected)? Do you have a way to verify that your NGFW is configured properly?

## The TAP to Tool™ Solution

1. Garland Technology's EdgeLens® Focus 1U Half-Rack TAP and Inline Security Packet Broker helps you manage the availability and reliability of the NGFW, ensuring it does not become a single point of failure in the network.
2. EdgeLens® Focus is a bypass TAP and a network packet broker hybrid, purposely built to manage the availability of inline tools, while providing packet visibility for out-of-band security tools like the Stamus Security Platform.
3. In this solution, EdgeLens Focus allows the Stamus Probe, deployed in an out-of-band format, to see traffic before and after the NGFW.
4. This joint solution allows you to quickly confirm and / or troubleshoot the NGFW to determine why threats weren't blocked as planned.

## Benefits

- Validate NGFW changes or updates were configured properly
- Troubleshoot why threats weren't blocked
- Protect the network from cyber risks and downtime
- Prevent your active inline tools from being a single point of failure (SPOF)
- Reduce the impact and reliance on maintenance windows



### Have Questions?

sales@garlandtechnology.com | +1 716.242.8500 | GarlandTechnology.com