

# Joint Solution Brief: Garland Technology and Industrial Defender

## Managing Cyber Risk in Evolving OT Environments

Increased connectivity in OT/ICS environments, driven by digitalization and modernization, has boosted business and operational efficiencies for industrial organizations. However, this evolution also increases the attack surface and complexity of the digital environment. Asset owners in industries like electric, utility, oil and gas, and manufacturing must closely monitor their OT assets' configurations, operations, and integrity to ensure they remain secure and compliant.

### JOINT SOLUTION OVERVIEW

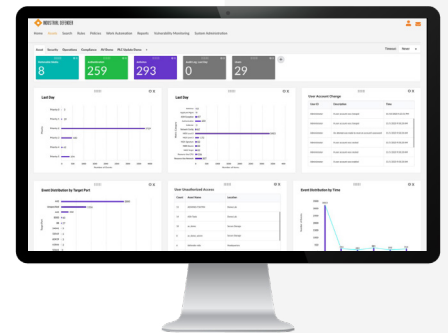
Garland Technology and Industrial Defender have joined forces to provide industrial organizations with unparalleled visibility, OT asset management, and operational resilience for critical infrastructure and industrial environments. This collaboration ensures cybersecurity best practices for network visibility, asset monitoring, maintaining system integrity, and compliance for critical infrastructure and industrial operations, combining Industrial Defender's leading solutions for OT asset management and Garland Technology's industry-proven TAPs, Network Packet Brokers, and Hardware Data Diodes.



## KEY COMPONENTS

- ◆ **Industrial Defender Platform:** Leading OT asset management solution providing the deepest, most comprehensive OT asset information for security and compliance. Offers deep asset inventory details, including software versions, vulnerabilities, patches, firewall rules, and PLC key switch positions. It serves as a centralized solution for OT asset management, change and configuration management, vulnerability management, and policy compliance.

**Combining Industrial Defender's platform with Garland Technology's Network TAPs enhances situational awareness of the OT environment.**

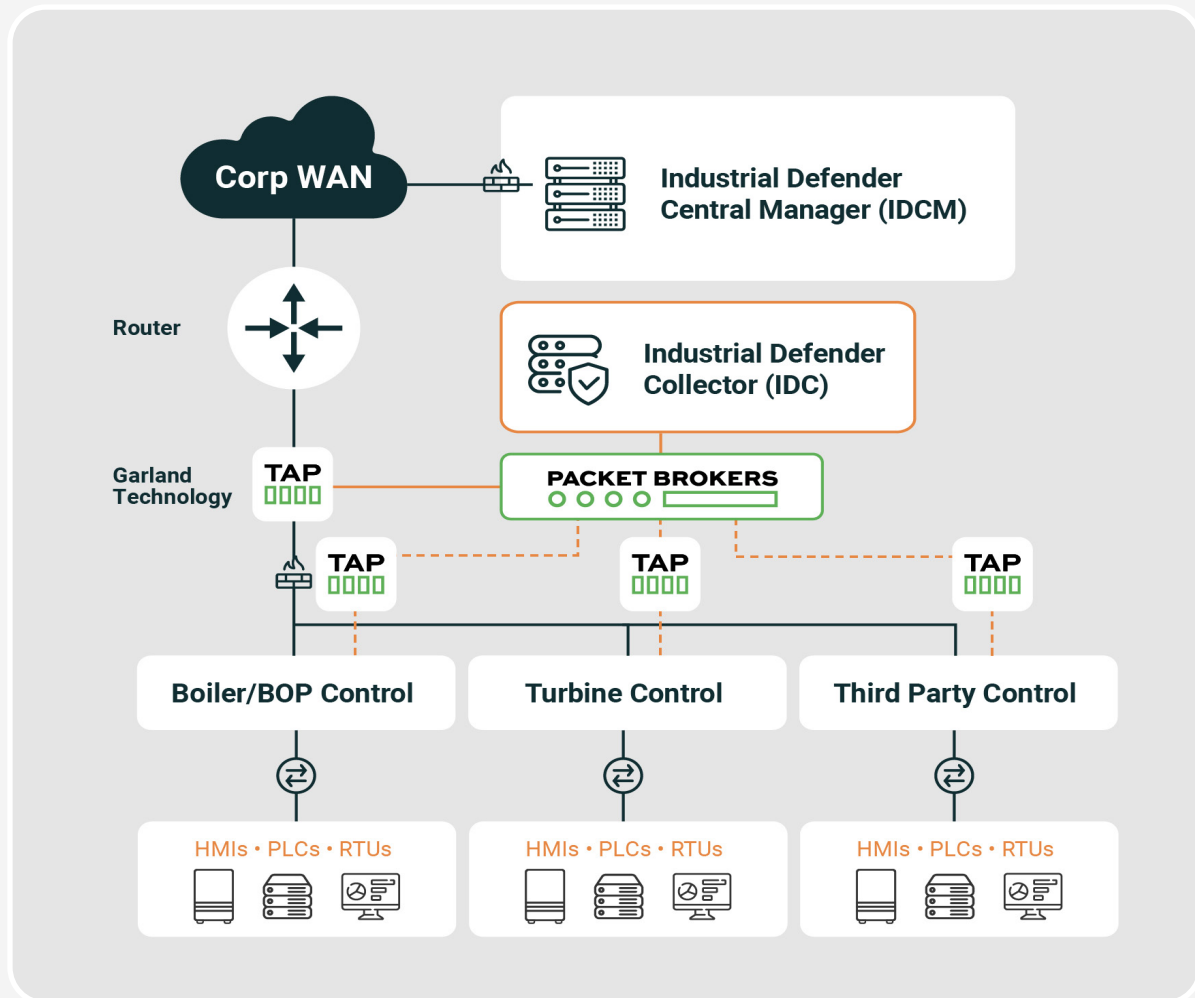


- ◆ **Garland Technology TAPs:** Provide the deepest levels of visibility into the packet level data, with no impact to the live network. By ensuring 100% of network traffic is copied and transmitted to monitoring tools in real time, TAPs improve uptime and guarantee comprehensive packet visibility for security solutions. Garland TAPs are independent and cannot be hacked as they do not have an IP address or a MAC address, making them invisible to the network.



Combining Industrial Defender's platform with Garland Technology's Network TAPs enhances situational awareness of the OT environment. The non-intrusive TAPs provide full packet visibility without compromising network performance, allowing for the capture of 100% of network traffic for monitoring purposes. This data enriches Industrial Defender's comprehensive OT asset inventory, providing detailed insights into vulnerabilities and configurations. This also enables monitoring traffic within trusted zones to detect intrusions or malicious activity.

## HOW IT WORKS



**Garland Network TAPs:** Analyze data from OT networks by mirroring network traffic. The tapped traffic can then feed into the Network Packet Broker, which combines, filters, and load balances the tapped traffic at scale into the Industrial Defender IDC data collector and/or management system.

**Industrial Defender Collector (IDC):** Analyzes the traffic, inventories all OT assets, and identifies vulnerable devices, cyber threats, and operational anomalies on your network.

**Industrial Defender Central Manager (IDCM):** Industrial Defender centralizes data with other OT asset management and configuration management data collected across the environment, making it reportable and actionable.

Together, Industrial Defender and Garland Technology deliver a robust, integrated OT asset management and security monitoring solution, allowing for enhanced compliance and operational resilience for industrial organizations.

### Benefits Summary

- ◆ **Comprehensive OT Asset Data:** Deliver the most detailed OT asset data needed to protect industrial operations and prove compliance.
- ◆ **Non-Intrusive Network Monitoring:** Gain a detailed view of all the traffic traversing a network, including communications between OT assets. This comprehensive visibility helps in identifying and monitoring all assets connected to the network.
- ◆ **Anomaly Detection:** Identify anomalies and irregularities in network traffic, which could indicate compromised devices or malicious activities. Early detection of such issues is critical in preventing significant security incidents.
- ◆ **Configuration and Change Management:** Maintain the integrity of all configurable elements of hardware or software, including capturing a baseline build or settings for any specific asset, detecting new configurations, and managing the deployment of new builds or configurations.
- ◆ **Vulnerability Management:** Proactively identify and mitigate vulnerabilities to minimize the window of opportunity for attackers, and make progress with prioritization and tracking of your patching and mitigation efforts as part of your compliance workflow.
- ◆ **Optimize Tool Performance:** Improve and air gap tool performance by providing complete unidirectional packet visibility while optimizing and aggregating traffic.
- ◆ **Packet Visibility for Legacy Networks:** Provide OT security tools packet visibility for legacy networks with unmanaged switches that cannot utilize SPAN.
- ◆ **Automate Compliance Efforts:** With built-in policy management and reporting templates, automate compliance efforts for standards including NERC CIP, IEC 62443, TSA SD, NIS2, AESCSF, CMMC, and more.

Learn more at [www.industrialdefender.com](http://www.industrialdefender.com) and [www.garlandtechnology.com](http://www.garlandtechnology.com)

### The Industrial Defender Difference

Industrial Defender protects the world's critical infrastructure from cyberattacks. As the leader in OT cybersecurity innovation, the company's scalable platform is used by the largest organizations in the world to empower security stakeholders with actionable data about their OT and IIoT infrastructure, enabling them to make informed risk management decisions. Learn more at [IndustrialDefender.com](http://IndustrialDefender.com).

Schedule a demo

#### For more information

1 (877) 943-3363 • (617) 675-4206 • [info@industrialdefender.com](mailto:info@industrialdefender.com)  
225 Foxborough Blvd, Foxborough, MA 0203