



See every bit, byte, and packet®

User Guide

P10GSFPA



09/2023

Release Version: 4.28.1

Copyright © 2023 Garland Technology, LLC. All rights reserved.

No part of this document may be reproduced in any form or by any means without prior written permission of Garland Technology, LLC.

The Garland Technology trademarks, service marks ("Marks") and other Garland Technology trademarks are the property of Garland Technology, LLC. PacketMAX Series products of marks are trademarks or registered trademarks of Garland Technology, LLC. You are not permitted to use these Marks without the prior written consent of Garland Technology.

All other trademarks and trade names mentioned in this document are the property of their respective holders.

Notice

The purchased products, services and features are stipulated by the contract made between Garland Technology and the customer. All or part of the products, services and features described in this document may not be within the purchase scope or the usage scope. Unless otherwise specified in the contract, all statements, information, and recommendations in this document are provided "AS IS" without warranties, guarantees or representations of any kind, either express or implied.

The information in this document is subject to change without notice. Every effort has been made in the preparation of this document to ensure accuracy of the contents, but all statements, information, and recommendations in this document do not constitute the warranty of any kind, express or implied.

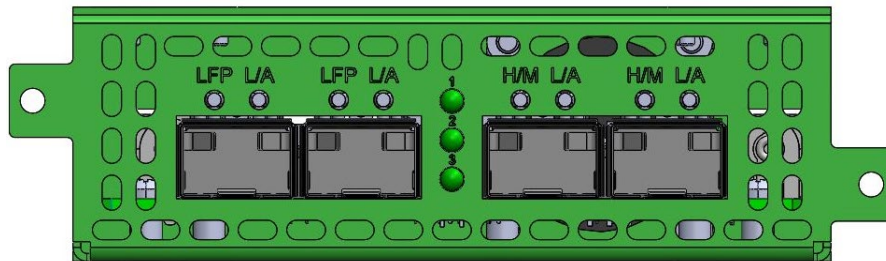
Table of Contents

P10GSFPA	4
Front Panel.....	4
LED Indications.....	4
Interfaces	5
Bypass Mode	5
Breakout Mode	5
Aggregate Mode	5
Aggregate 2 Mode	5
Span Mode	5
Span Packet Inject Mode	5
Rear Panel	6
LED Indications.....	6
Switch Settings	6
Installation Procedure.....	7
Optional Rack Mount Bracket	7

P10GSFPA

This document describes the front panel, LED indications, interfaces, rear panel, rear switch and installation procedure for the P10GSFPA. The unit supports six application modes, bypass, breakout, aggregate, aggregate 2, span and span packet inject. LFP and fail mode (open) are supported on the network ports for the bypass, breakout, and aggregate modes.

Front Panel



LED Indications

Port 1 LFP	LFP LED
Port 1 L/A	Link/Activity LED
Port 2 LFP	LFP LED
Port 2 L/A	Link/Activity LED
Port 3 H/M	N/A
Port 3 L/A	Link/Activity LED
Port 4 H/M	N/A
Port 4 L/A	Link/Activity LED
LED 1	Bypass LED
LED 2	N/A
LED 3	N/A

Interfaces

Bypass Mode

Port 1	Network Port
Port 2	Network Port
Port 3	Inline Appliance Port
Port 4	Inline Appliance Port

Breakout Mode

Port 1	Network Port	
Port 2	Network Port	
Port 3	Breakout Port	Ingress Port 1
Port 4	Breakout Port	Ingress Port 2

Aggregate Mode

Port 1	Network Port	
Port 2	Network Port	
Port 3	Aggregate Port	Ingress Port 1 / Port 2
Port 4	Aggregate Port	Ingress Port 1 / Port 2

Aggregate 2 Mode

Port 1	Network Port	Ingress Span Port 3 / Port 4
Port 2	Network Port	Ingress Span Port 3 / Port 4
Port 3	Aggregate Span Port	Ingress Port 1 / Port 2
Port 4	Aggregate Span Port	Ingress Port 1 / Port 2

Span Mode

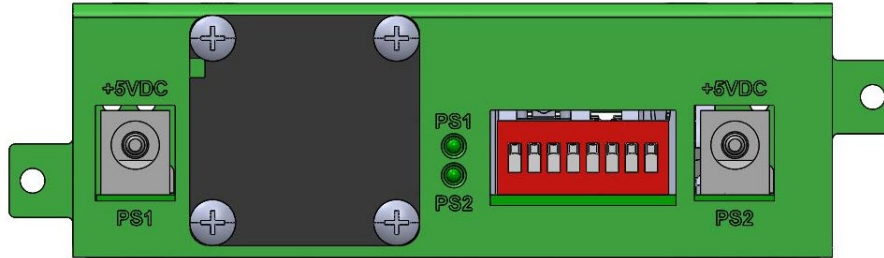
Port 1	Network Port	Ingress Span Port 2 / Port 3 / Port 4
Port 2	Span Port	Ingress Port 1
Port 3	Span Port	Ingress Port 1
Port 4	Span Port	Ingress Port 1

Span Packet Inject Mode

Port 1	Network Port	Ingress Span Port 2 / Port 3 / Port 4
	Network Port	Egress Packet Inject Port 2 / Port 3 / Port 4
Port 2	Span Port	Ingress Port 1
	Packet Inject Port	Egress Port 1
Port 3	Span Port	Ingress Port 1
	Packet Inject Port	Egress Port 1

Port 4 Span Port Ingress Port 1
 Packet Inject Port Egress Port 1

Rear Panel



LED Indications

PS1 Power Supply 1 LED
 PS2 Power Supply 2 LED

Switch Settings

Switch 1	Port 1 and 2	On-10G	Off-1G		
Switch 2	LFP	On-Enabled	Off-Disabled		
Switch 3/4/5	Mode	Bypass	3-Off	4-Off	5-Off
		Breakout	3-On	4-Off	5-Off
		Aggregate	3-Off	4-On	5-Off
		Span	3-On	4-On	5-Off
		Span (PI)	3-Off	4-Off	5-On
		Aggregate 2	3-On	4-Off	5-On
Switch 6	Port 3	On-10G	Off-1G		
Switch 7	Port 4	On-10G	Off-1G		
Switch 8	N/A	Off			

* LFP is not supported for 1G and 10G copper applications. Switch 2 Off.

* The unit must be power cycled if the switch settings are modified.

Installation Procedure

1. The P10GSFPA may be installed in any available 1U slot of a network rack and secured with rack mount screws or in the optional rack mount bracket, sold separately. The optional rack mount bracket is shown below.
2. Set the switches on the rear of the unit for the desired speed, LFP option and application.
3. Connect power cables to PS1 and PS2 on the rear panel and plug into available power sources.
4. Verify that the PS1 LED and PS2 LED on the rear panel are illuminated.
5. Insert the correct SFPs for the desired speed and application. This step can be done prior to power on if desired.
6. Connect the cables or fibers to the desired ports for the application.
7. Verify the L/A LEDs are illuminated green indicating link.
8. Verify the L/A LEDs are flashing green indicating link and traffic.

Optional Rack Mount Bracket

