



See every bit, byte, and packet®

User Guide

P10GSFP+A

08/2024

Release Version: 4.31.1

Copyright © 2024 Garland Technology, LLC. All rights reserved.

No part of this document may be reproduced in any form or by any means without prior written permission of Garland Technology, LLC.

The Garland Technology trademarks, service marks ("Marks") and other Garland Technology trademarks are the property of Garland Technology, LLC. PacketMAX Series products of marks are trademarks or registered trademarks of Garland Technology, LLC. You are not permitted to use these Marks without the prior written consent of Garland Technology.

All other trademarks and trade names mentioned in this document are the property of their respective holders.

Notice

The purchased products, services and features are stipulated by the contract made between Garland Technology and the customer. All or part of the products, services and features described in this document may not be within the purchase scope or the usage scope. Unless otherwise specified in the contract, all statements, information, and recommendations in this document are provided "AS IS" without warranties, guarantees or representations of any kind, either express or implied.

The information in this document is subject to change without notice. Every effort has been made in the preparation of this document to ensure accuracy of the contents, but all statements, information, and recommendations in this document do not constitute the warranty of any kind, express or implied.

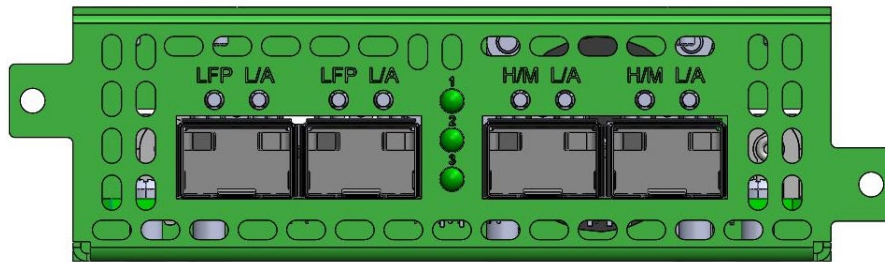
Table of Contents

| | |
|-----------------------------------|---|
| P10GSFP+A | 4 |
| Front Panel..... | 4 |
| LED Indications..... | 4 |
| Interfaces | 5 |
| Breakout Mode | 5 |
| Aggregate Mode | 5 |
| Span Mode | 5 |
| Aggregate 2 Mode | 5 |
| Aggregate 3-1 Mode | 5 |
| Rear Panel | 6 |
| LED Indications..... | 6 |
| Switch Settings | 6 |
| Installation Procedure..... | 7 |
| Optional Rack Mount Bracket | 7 |

P10GSFP+A

This document describes the front panel, LED indications, interfaces, rear panel, rear switch and installation procedure for the P10GSFP+A. The unit supports five application modes, Breakout, Span, Aggregate, Aggregate 2 and Aggregate 3-1.

Front Panel



LED Indications

| | |
|------------|-------------------|
| Port 1 LFP | LFP LED |
| Port 1 L/A | Link/Activity LED |
| Port 2 LFP | LFP LED |
| Port 2 L/A | Link/Activity LED |
| Port 3 H/M | N/A |
| Port 3 L/A | Link/Activity LED |
| Port 4 H/M | N/A |
| Port 4 L/A | Link/Activity LED |
| LED 1 | N/A |
| LED 2 | N/A |
| LED 3 | N/A |

Interfaces

Breakout Mode

| | | |
|--------|---------------|----------------|
| Port 1 | Network Port | |
| Port 2 | Network Port | |
| Port 3 | Breakout Port | Ingress Port 1 |
| Port 4 | Breakout Port | Ingress Port 2 |

Aggregate Mode

| | | |
|--------|----------------|-------------------------|
| Port 1 | Network Port | |
| Port 2 | Network Port | |
| Port 3 | Aggregate Port | Ingress Port 1 / Port 2 |
| Port 4 | Aggregate Port | Ingress Port 1 / Port 2 |

Span Mode

| | | |
|--------|--------------|----------------|
| Port 1 | Network Port | |
| Port 2 | Span Port | Ingress Port 1 |
| Port 3 | Span Port | Ingress Port 1 |
| Port 4 | Span Port | Ingress Port 1 |

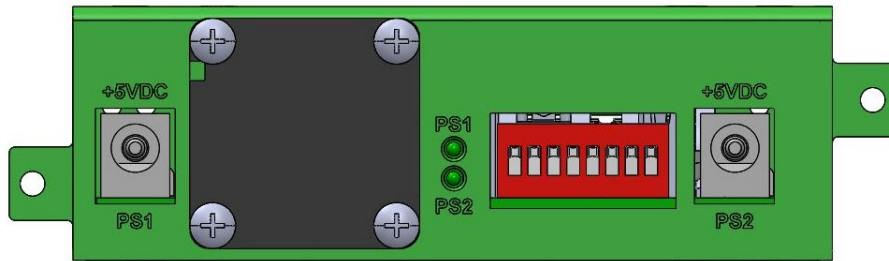
Aggregate 2 Mode

| | | |
|--------|----------------|-------------------------|
| Port 1 | Network Port | |
| Port 2 | Network Port | |
| Port 3 | Aggregate Port | Ingress Port 1 / Port 2 |
| Port 4 | Aggregate Port | Ingress Port 1 / Port 2 |

Aggregate 3-1 Mode

| | | |
|--------|----------------|----------------------------------|
| Port 1 | Network Port | |
| Port 2 | Network Port | |
| Port 3 | Network Port | |
| Port 4 | Aggregate Port | Ingress Port 1 / Port 2 / Port 3 |

Rear Panel



LED Indications

| | |
|-----|--------------------|
| PS1 | Power Supply 1 LED |
| PS2 | Power Supply 2 LED |

Switch Settings

| | | | |
|---------------------|----------------------|-------------------|--------|
| Switch 1 | Port 1 Speed | On-10G | Off-1G |
| Switch 2 | Port 2 Speed | On-10G | Off-1G |
| Switch 3/4/5 | Mode | | |
| | Breakout | 3-Off 4-Off 5-Off | |
| | Aggregate | 3-On 4-Off 5-Off | |
| | Span | 3-Off 4-On 5-Off | |
| | Aggregate 2 | 3-On 4-On 5-Off | |
| | Aggregate 3-1 | 3-Off 4-Off 5-On | |
| Switch 6 | Port 3 Speed | On-10G | Off-1G |
| Switch 7 | Port 4 Speed | On-10G | Off-1G |
| Switch 8 | N/A | Off | |

* LFP is supported automatically for the Breakout and Aggregate Modes, however not supported for 1G and 10G copper applications.

* The unit must be power cycled if the switch settings are modified.

Installation Procedure

1. The P10GSFP+A may be installed in any available 1U slot of a network rack and secured with rack mount screws or in the optional rack mount bracket, sold separately. The optional rack mount bracket is shown below.
2. Set the switches on the rear of the unit for the desired speeds and mode.
3. Connect power cables to PS1 and PS2 on the rear panel and plug into available power sources.
4. Verify that the PS1 LED and PS2 LED on the rear panel are illuminated.
5. Insert the correct SFPs for the desired speed and mode. This step can be done prior to power on if desired.
6. Connect the cables or fibers to the desired ports.
7. Verify the L/A LEDs are illuminated green indicating link.
8. Verify the L/A LEDs are flashing green indicating link and traffic.

Optional Rack Mount Bracket

